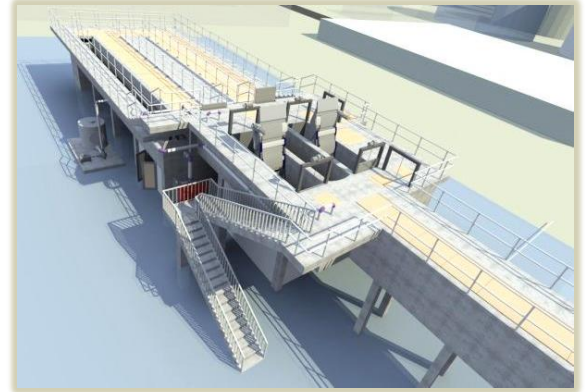


Marafiq Waste Water Treatment Plant, Jubail - KSA

MARAFIQ

It is the utility lifeline to the industrial cities of Jubail and Yanbu. These two cities are a beacon of light on the Kingdom's journey of national economic development and privatisation. In a relatively short space of time, Marafiq has succeeded admirably in laying a solid foundation as a private enterprise with a Customer-focused approach.

**PLANT
CAPACITY
60,000 m³/day**



Jubail Wastewater Treatment and Disposal

The purpose of Marafiq industrial treatment systems is to conserve water by making maximum use of desalinated water in a complete cycle of use, treatment and reuse.

Industrial effluent is collected and treated, which is pumped back to the industrial areas for reuse in fire-fighting systems and other industrial applications.

The Industrial Wastewater Treatment Plant is designed to treat the incoming industrial wastewater generated from Industries located at Jubail Industrial City.

MENA-Water

MENA-Water provided the complete design, supply, installation and commissioning startup for the complete Inlet works for Marafiq Jubail IWWTP with plant capacity of 60,000 m³/day.

Screening, screenings conveyor & compactor, manual screen, longitudinal grit removal and grit washing system, grease removal, odor control system, automated penstock & measuring Instruments. The complete plant is operated by Quantum PLC & SCADA.

Equipment	Application
Multi Rake Screen	screenings removal
Manual Screen	bypass screening removal
Launder Channel	screening transport
Screening Conveyor	washing and compaction
Grit Trap	sand removal
Grit Washer	sand washing & classifying
Grease Trap	grease & FOG removal
Penstocks & Stoplog	flow control & regulation
Air Blowers	grit trap aeration
Activated Carbon Filter	odor control system
Instrumentation	flow, level (ultrasonic), pH, VOC, temperature, conductivity.
MCC & Quantum PLC	complete control with SCADA





2 x Multi Rake Screen & Manual Screen



1 x Screenings Washing Conveyor



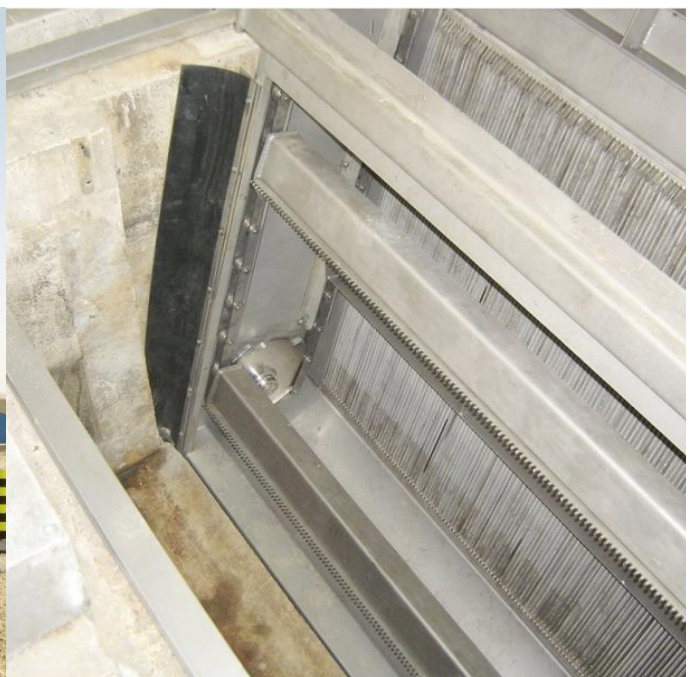
2 x Longitudinal Grit Trap & Grease Trap



2 x Blower for Aeration (1 duty/1 standby)



2 x Grit Washer with Degasing Unit



Installation of Multi Rake Screen in Channel